

Fiscal Year 2026 Budget



Eastern Idaho

Public Health

Prevent. Promote. Protect.

Our Vision

Healthy People In Healthy Communities

Our Mission

- *To prevent disease, disability and premature death*
 - *To promote healthy lifestyles*
 - *To protect and promote the health and quality of our environment*
-

To accomplish this mission, Eastern Idaho Public Health provides clinics, health education, consultative services, referrals for special medical care, environmental health protection, and epidemiological investigation. These services are available to every resident within our eight-county area.

Summary

Eastern Idaho Public Health (EIPH) is dedicated to improving lives within our 8-county region. As we prepare for Fiscal Year 2026, EIPH is navigating a changing financial landscape. While we are seeing shifts in our budget - due to changes in funding sources, cost adjustments, and evolving community health priorities - we remain committed to continuing essential public health programs our communities rely on. Priorities for the next fiscal year include efforts to engage individuals and communities on efforts for prevention of disease, promoting healthy behaviors, and protecting our environment.

The FY26 budget reflects a focus on sustainability and efficiency, allowing us to maintain core public health initiatives while also adjusting to new fiscal realities. Program budgets have been restructured to better align with current needs, but our foundational programs - including immunizations, disease prevention, epidemiology, preparedness, health education, Women, Infant, and Children (WIC), and environmental health - will remain in place and fully operational.

We are grateful for the continued support of our partners and stakeholders, and are confident that, even with the necessary adjustments, EIPH is well-positioned to serve and support the health of our communities in the year ahead. Investment in public health yields significant benefits.

Fiscal Year 2026 Budget

Salary	Benefits	Operating	Designated	Total
\$4,278,743	\$1,864,008	\$3,437,107	\$400,000	\$9,979,858

Operating

Budgeted operating expenses reflect a 7% decrease from fiscal year 2025. This reduction is largely due to the scaling back of the Family Planning program that had significant operating expenses. While difficult, this decision was necessary to maintain the overall stability and sustainability of our operations moving forward.

Inflation continues to be a challenge, impacting the cost of supplies, contracts, and day-to-day operations. Despite these pressures, we have worked to prioritize critical services and ensure that essential programs remain fully supported.

Salaries

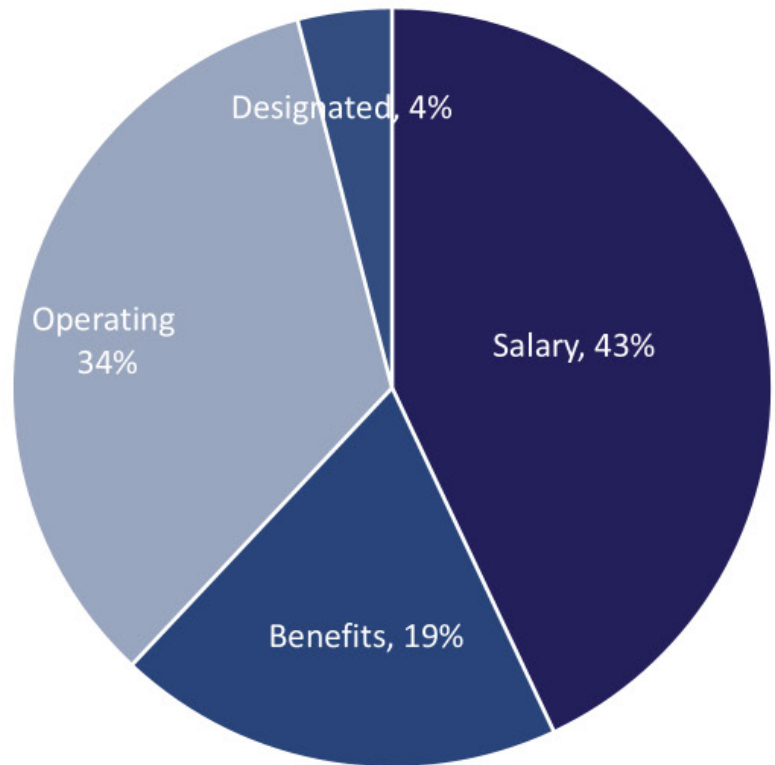
Economic growth in Idaho and an increased cost of living are placing pressure on staff retention. This year's budget includes an across-the-board 3% raise for employees. The hardworking staff at EIPH continue to provide dedicated, timely, and critical public health services while keeping costs low.

Employee Benefits

As expected, EIPH employer health insurance costs are increasing from the initial reduction offered by the Office of Group Insurance switching insurance providers in 2025. We will see a \$1,300 increase per staff member this year. This equates to an approximate \$95,000 increase in FY26.

Of note, in April 2025, a social security referendum on determining employee's participation in Social Security was held. This referendum was passed by EIPH employees, continuing their participation in Social Security hereafter.

Figure 1: Percent Distribution of FY2026 Budget



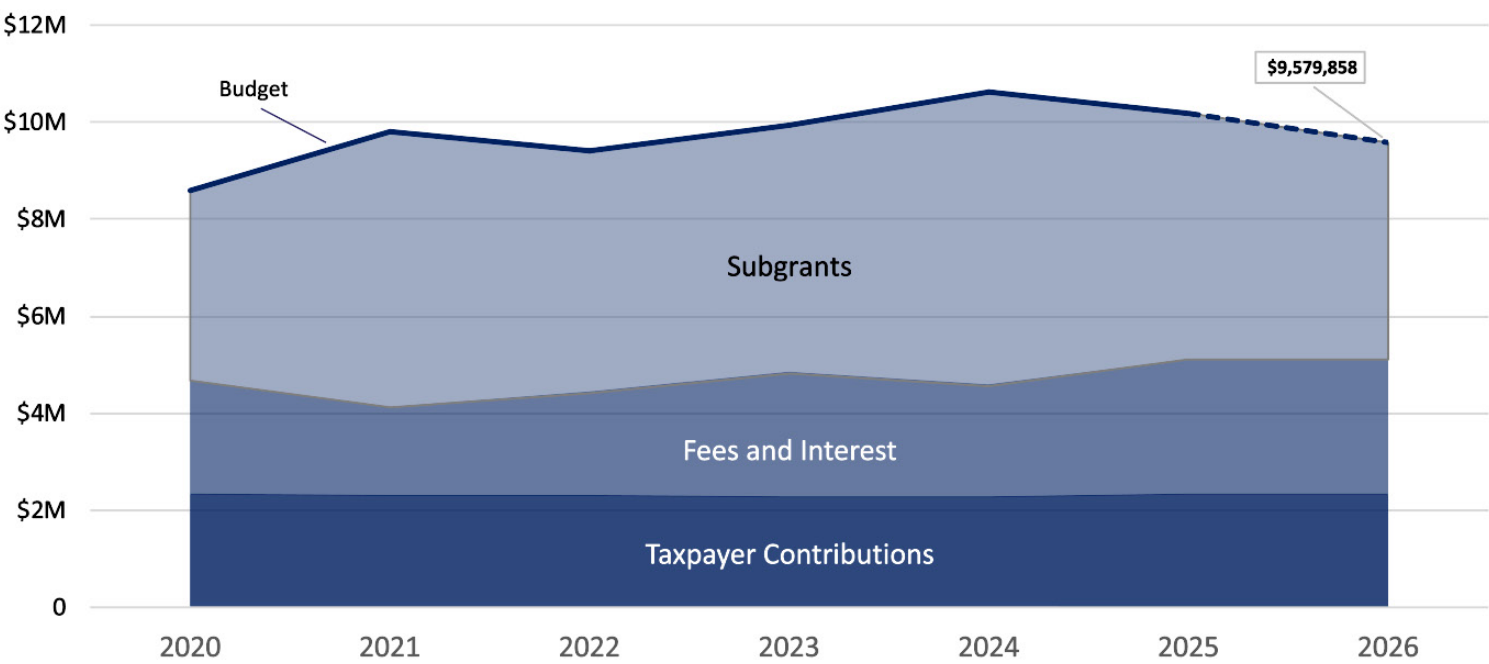
Fees and Interest

For fiscal year 2026, EIPH is budgeting fee and interest revenue to be flat. We will monitor construction activity and therefore the resulting septic permit fee to monitor for any sudden changes in the market. Other fees have stabilized from previous years' increases.

Subgrants

The fiscal year 2026 budget captures an eight (8%) reduction in subgrant funding compared to FY25. This is mostly attributed to the loss of the funding that maintained our Family Planning program. Other programs are also observing reduced or altered funding as a result of ongoing shifts in funding streams or discontinuation of federal awards. EIPH will monitor closely during FY 2026 for this continual fluctuation in subgrant funds.

Figure 2: Revenue Distributions FY2020-2026



EIPH Budget Distributions FY2020-2026: Local taxpayer contributions have remained near constant, while contracts and fees have experienced volatility from year to year.

EIPH is not requesting an increase in county appropriations for fiscal year 2026. Despite not requesting an increase, variations occur year-to-year due to the appropriation formula that utilizes market value and population metrics.

Table 1: Appropriations by County

County	FY 2026 Amount	FY 2026 Share	Change from FY 2025	% Change
Bonneville	\$1,132,379	48.4%	-\$12,841	-1%
Clark	\$8,561	0.4%	-\$234	-3%
Custer	\$51,837	2.2%	-\$141	0%
Fremont	\$168,986	7.2%	+\$3,251	2%
Jefferson	\$286,182	12.2%	-\$585	0%
Lemhi	\$79,137	3.4%	+\$47	0%
Madison	\$415,542	17.7%	+\$4,890	1%
Teton	\$196,612	8.4%	+\$5,613	3%
Total	\$2,339,236	100%	\$0	0%

Figure 3: Expenditures per Capita

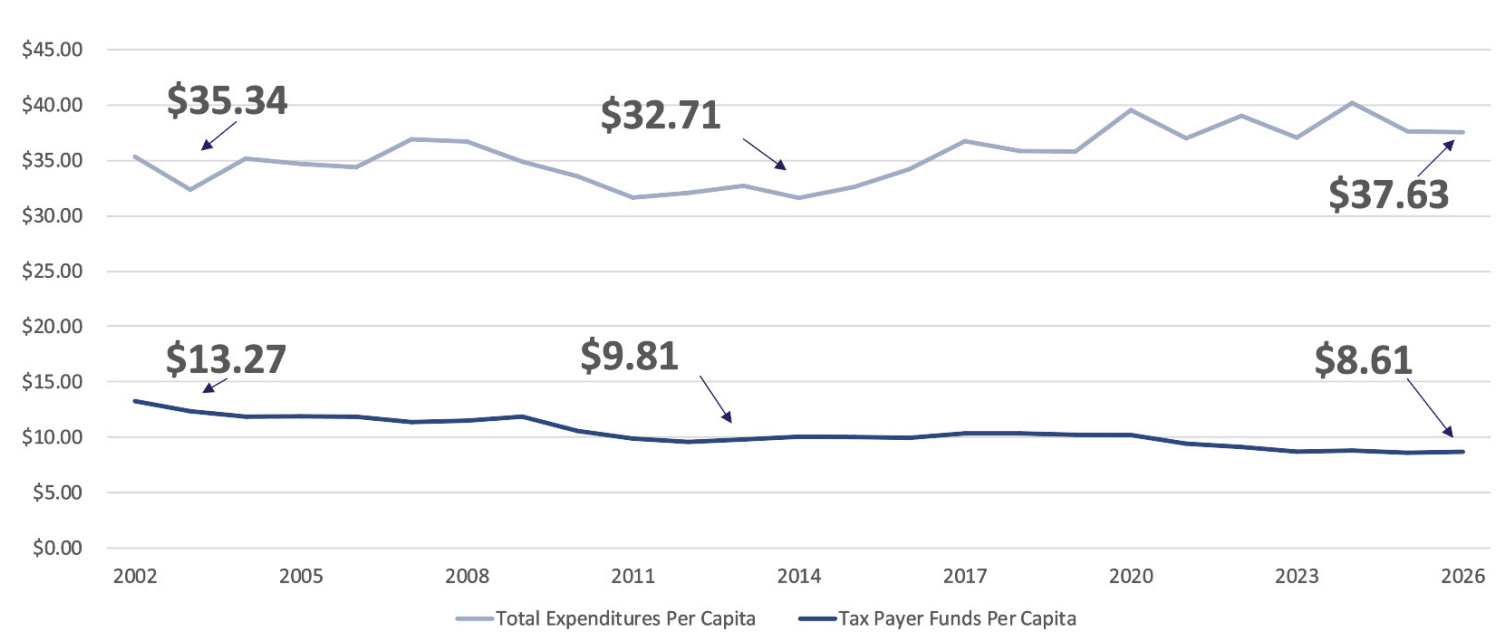


Table 2: County Populations and Property Values

COUNTY	FISCAL YEAR	POPULATION ESTIMATE	% POPULATION OF DISTRICT	POPULATION 70% DISTRIBUTION	TAXABLE MARKET VALUE	% VALUATION OF DISTRICT	VALUATION 30% DISTRIBUTION	BUDGET COUNTY COST POPULATION + VALUATION
BONNEVILLE	2026	133,644	50.40%	\$825,283	\$16,421,557,368	43.76%	\$307,096	\$1,132,379
	2025	131,366	50.40%	\$825,283	\$16,627,338,721	45.59%	\$319,937	\$1,145,220
CLARK	2026	794	0.30%	\$4,912	\$194,875,581	0.52%	\$3,649	\$8,561
	2025	801	0.31%	\$5,076	\$191,782,031	0.53%	\$3,719	\$8,795
CUSTER	2026	4,597	1.73%	\$28,328	\$1,255,846,369	3.35%	\$23,509	\$51,837
	2025	4,523	1.74%	\$28,328	\$1,228,431,742	3.37%	\$23,650	\$51,978
FREMONT	2026	14,399	5.43%	\$88,914	\$4,282,388,052	11.41%	\$80,072	\$168,986
	2025	14,196	5.45%	\$89,242	\$3,975,270,850	10.90%	\$76,493	\$165,735
JEFFERSON	2026	34,854	13.14%	\$215,163	\$3,795,687,041	10.12%	\$71,019	\$286,182
	2025	34,198	13.12%	\$214,835	\$3,737,216,117	10.25%	\$71,932	\$286,767
LEMHI	2026	8,397	3.17%	\$51,908	\$1,455,507,848	3.88%	\$27,229	\$79,137
	2025	8,441	3.24%	\$53,054	\$1,354,735,481	3.71%	\$26,036	\$79,090
MADISON	2026	55,549	20.95%	\$343,049	\$3,877,180,866	10.33%	\$72,493	\$415,542
	2025	54,547	20.93%	\$342,721	\$3,529,015,342	9.68%	\$67,931	\$410,652
TETON	2026	12,932	4.88%	\$79,908	\$6,239,826,697	16.63%	\$116,704	\$196,612
	2025	12,549	4.82%	\$78,926	\$5,823,898,646	15.97%	\$112,073	\$190,999
TOTAL	2026	265,166	100%	\$1,637,465	\$37,522,869,822	100%	\$701,771	\$2,339,236
	2025	260,621	100%	\$1,637,465	\$36,467,658,930	100%	\$701,771	\$2,339,236

Idaho Code 39-424 The formula for the county assessments is based on county population and property values.

POPULATION ESTIMATE - Idaho Dept. of Commerce

MARKET VALUE - Idaho Tax Commission

Eastern Idaho Public Health's Board of Health

Blair Dance, Chairman	Fremont County
Brent Mendenhall, Vice Chairman	Madison County
Dr. Aaron Gardner	Physician Representative
Commissioner Jon Walker	Bonneville County
Commissioner Greg Shenton	Clark County
Commissioner Gordon Vaden	Custer County
Commissioner Shayne Young	Jefferson County
Commissioner Kim Caywood	Lemhi County
Commissioner Michael Whitfield	Teton County



Eastern Idaho
Public Health

Prevent. Promote. Protect.



eiph.id.gov